

A SALUTE TO

RESILIENCE

2021 Report to the Community



Partners for Health
FOUNDATION



Partners
for Health
FOUNDATION

Saluting

***the resiliency of local safety net providers
who redesigned how they work in response to the
COVID-19 pandemic.***

We proudly supported their efforts, including grants totaling **\$552,000** that were awarded to soup kitchens, food pantries and organizations working to address and prevent both hunger and homelessness.



Photos courtesy of Toni's Kitchen

Montclair Child Development Center received funding for a van to transport food prepared by staff in their industrial kitchen in Montclair to their schools in Glen Ridge and Orange. During the months of state-mandated shut down, the van was redeployed to deliver thousands of healthy meals directly to the homes of children served by this Head Start program. For many of these preschoolers, MCDC is their main source of daily nutrition.



Photo courtesy of Montclair Child Development Center

The Senior Livability Initiative in West Orange provided transportation to vaccine sites and food pantries, technology training, workshops, and outdoor fitness and yoga classes to keep seniors engaged and minimize their social isolation. The pandemic underscored the digital connectivity divide within older populations.



After a full year of remote learning, seniors who participate in the **Montclair Institute for Lifelong Learning** continue to enjoy programs from the comfort of their own homes. Thanks to unlimited space in virtual classrooms, the MILL has been able to welcome everyone and eliminate waiting lists for these programs.



Screen shot courtesy of the MILL

A grant to **Montclair Neighborhood Development Corporation** gave financial assistance to residents who don't qualify for federal benefits; in many cases, the small businesses they work for were closed because of the pandemic.



New Jersey Citizen Action offered free virtual and contactless drop-off tax preparation services during the 2021 tax season for residents in the Bloomfield area. Their efforts secured federal and state refunds exceeding \$1.2 million for 310 clients, 91% of whom earned less than \$45,000 last year.

Leveraging our dollars for greater impact

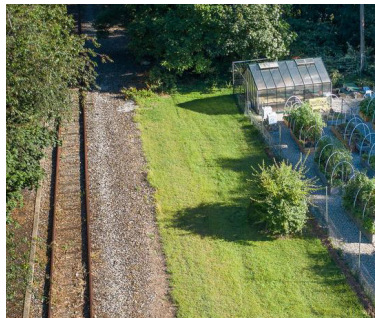
Funding to [City Green's](#) Garden State Good Food Network brings greater economic opportunities to farmers and improves access to good nutrition for consumers who use SNAP, WIC or Senior FMNP. Through this program, customers who use their Families First EBT card at participating markets receive a dollar-for-dollar match in "Good Food Buck" incentive dollars for more fruits and vegetables.



Photos courtesy of City Green



Rendering by MNLA courtesy of OSI



Drone photo by JM Sorge courtesy of OSI

A Partners for Health grant to the [Open Space Institute](#) helped to attract additional resources to pursue the acquisition of the old Boonton line for the proposed Essex Hudson Greenway. A second grant is informing broad community outreach and the eventual design of the trail, to ensure it would provide equitable access to the outdoors.

[Daytime respite](#) from the cold for those without a home was provided when public spaces in Montclair were closed. Small grants from Partners for Health, The Schumann Fund for New Jersey, and The Montclair Foundation funded start-up costs for this program.

Envisioning **HEALTH FOR ALL**

Following an in-depth strategic planning process, **Partners for Health Foundation** has updated its Vision and Mission to be more closely aligned with our commitment to invest in programs, policies and organizations that lead to healthy communities.

Vision: Thriving communities that ensure health for all

Mission: Partnering to advance health equity through learning, grantmaking, and advocating

We have awarded grants totaling nearly **\$16 million** since 2008.

Your donation will help us do even more!

partnersfdn.org/donate-now



Partners for Health
FOUNDATION

Montclair, New Jersey