



**Partners for Health**  
FOUNDATION

# **ANNUAL GOLF TOURNAMENT**

## **Event Program**

**Supporting local organizations working toward access to  
AFFORDABLE HOUSING & HEALTHY FOOD FOR ALL**



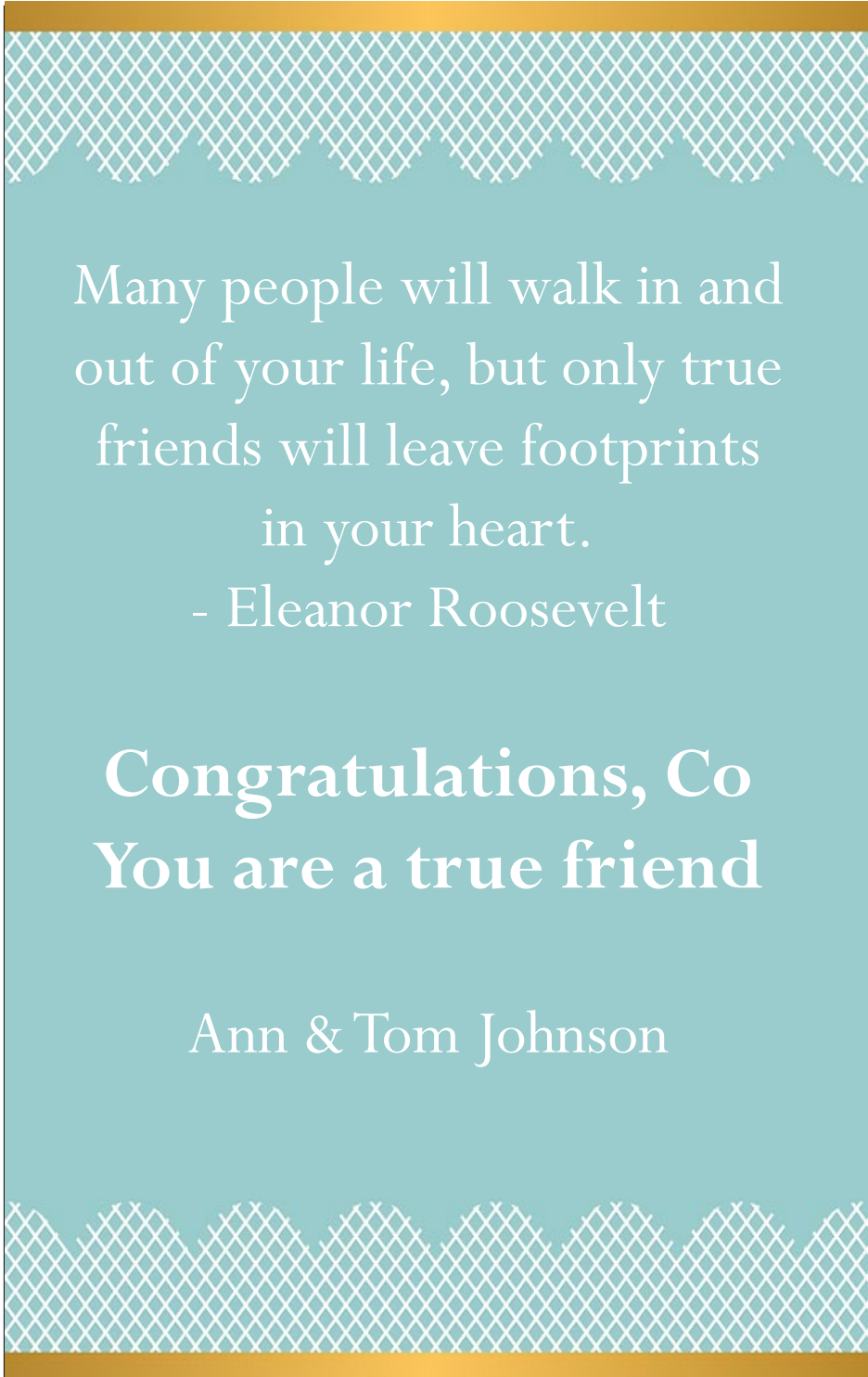
**Honoring:**

**Copeland G. Bertsche**

**Community Leader**

**Thursday, October 7, 2021**

**Green Brook Country Club**



Many people will walk in and  
out of your life, but only true  
friends will leave footprints  
in your heart.

- Eleanor Roosevelt

**Congratulations, Co**  
**You are a true friend**

Ann & Tom Johnson



Partners for Health  
FOUNDATION

**Annual Golf Tournament  
honoring  
Copeland G. Bertsche, Community Leader**

**Thursday, October 7, 2021**

**DAY AT A GLANCE**

**Golf**

Participant check-in	9:30 AM
BBQ Lunch	10:30 AM
Shotgun Start	12:00 PM

**Cocktail Hour**

5:00 PM

**Evening Program - Ballroom**

6:00 PM

**Welcome Remarks**

6:15 PM

Cliff Finkle, Board Chair  
Pam Scott, Executive Director

**Honoree Recognition**

Introduction by Sandy Prater

**Dinner**

6:45 PM

**Winners of the Day**

7:15 PM

Competition Prizes  
Silent Auction  
50/50 Drawing

# **PARTNERS FOR HEALTH**

## **Annual Golf Tournament**

**Thursday, October 7, 2021**  
**Green Brook Country Club**

### **WELCOME**

It is our pleasure to welcome you to the Partners for Health Annual Golf Tournament, as we honor Co Bertsche for the countless ways he has served our community and the Foundation.

Proceeds from today's outing will support local organizations working toward access to affordable housing and healthy food for all. Our efforts focus on our neighbors who are vulnerable to health inequities, which includes individuals and families who struggle to put food on the table, those who are one step away from financial misfortune that could leave them homeless, and those who lack permanent housing.

**THANK YOU** for your generous support of this event!

*Clifford B. Finkle IV*  
Board Chair

*John F. Kelly*  
Golf Committee Chair

### **SHOTGUN SHAMBLE RULES**

- All members of the foursome tee off.
- The best ball of the four tee shots is selected.
- All players move their balls to the spot of the best ball.
- From this point, the hole is played out at stroke play, with all members of the foursome playing their own ball into the hole.





---

# 2021 TOURNAMENT SPONSORS

---

## PREMIER SPONSOR



Hackensack Meridian  
Mountainside Medical Center

## CHALLENGE SPONSORS

bdp holdings llc



Izumi Hara & David Koschik  
John & Patrice Kelly  
Gretchen & Sandy Prater

## COMMUNITY LEADERSHIP SPONSOR

McMullen Family Foundation

## CORPORATE CADDIE SPONSOR

ALLEN & OVERY

## PIN FLAG SPONSORS

Chubb  
Greenbaum Rowe Smith & Davis, LLP  
Hackensack Meridian Mountainside Medical Staff  
William H. Connolly & Co.

## DINNER SPONSORS

Hal & Cathy Garrity  
Thomas & Patricia Lugaric

## GOLF BALL SPONSOR

Ken Rivlin & Human Needs Food Pantry

---



# Partners for Health

FOUNDATION

## BOARD OF TRUSTEES

Clifford B. Finkle IV, Board Chair  
Gloria C. Essoka, PhD, RN, 1st Vice Chair  
Douglas B. Bauer, 2nd Vice Chair  
Joel Jeffrey, Treasurer  
Beverly Riddick, Secretary

Lisa Amato  
Diana Candelejo, MPA  
Thomas Creaser  
Sara Elnakib, PhD, MPH, RD  
Robert L. Erickson, MD  
Felicia Fdyfil-Horne, LCSW  
Paula Gutierrez, MHA

Lynne S. Katzmann  
Kate Kelly  
Deborah Leow, MSW  
Christopher Petermann  
Glenn M. Reiter  
Tekeyah Sears, EdD, MPH  
Calvin O. Trevenen

Ann Johnson, Trustee Emerita

### STAFF

Pamela S. Scott, Executive Director  
Kathleen W. Smith, Program Director  
Jacqueline Gifuni-Koutsouris, Program Associate  
Kathy Fess, Bookkeeper

### Golf Committee

John F. Kelly, Chair

Lisa Amato  
Co Bertsche  
Robert Erickson, MD  
Cliff Finkle  
Paul Lisovicz  
Chris Petermann  
Kevin Rendino  
Ken Rivlin

### Host Committee

Lisa Amato, Co-chair  
Gretchen Prater, Co-chair

Andie Bertsche  
Sandy Carter  
Christina Cotton  
Liz Donald  
Felicia Fdyfil-Horne  
Emer Featherstone  
Lynn Glasser  
Izumi Hara  
Ann Johnson

Kate Kelly  
Lynn McFarlane  
Grettel Muscato  
Lyn Reiter  
Beverly Riddick  
Tekeyah Sears  
Sue Sorger  
Linda Sterling  
Judy Turner

## Did You Know?

Since 2015, Partners for Health has awarded grants for fresh produce to soup kitchens and food pantries totaling \$770,000.



## Did You Know?

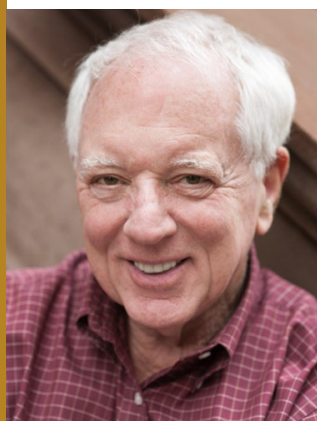
The number of New Jerseyans struggling with hunger is projected to rise by 56% as a direct result of COVID. This is 10 percentage points higher than the national average.



*Congratulations  
Co!*

*Daniel O'Connell, CPA*

We are proud  
to honor  
**Co Bertsche,**  
an outstanding  
community leader,  
whose support  
has been  
instrumental  
in carrying out  
our mission



**Partners for Health**  
FOUNDATION  
[partnersfdn.org](http://partnersfdn.org)

*Partners  
for Health  
Board of  
Trustees*



**ASHENFELTER, TREMBULAK,  
MCDONOUGH, GOLIA & TREVENEN, LLP**

ATTORNEYS AT LAW

*Co,*

WE HONOR YOUR YEARS OF HIGHLY  
COMPETENT SERVICE AND COMMITMENT

ON BEHALF OF

*Partners for Health*

AND THE GREATER

MONTCLAIR COMMUNITY.

363 BLOOMFIELD AVENUE, SUITE 2-C • MONTCLAIR, N.J. 07042

TEL: (973) 744-2100 • [www.montclairlaw.com](http://www.montclairlaw.com)



## 2021 GOLF TOURNAMENT HONOREE



### **Copeland G. Bertsche** **Community Leader**

Partners for Health is delighted to recognize Copeland G. Bertsche for his service to the community and the Foundation at our annual golf outing.

Co's service to the greater Montclair community stretches back five decades and includes a range of educational, healthcare, and social service organizations. Most recently, as president of the Mountainside Hospital Advisory Board and a director of Atlantic Health System, Co was instrumental in leading the search for a purchaser and negotiating the sale of Mountainside Hospital to Merit Health System in 2007. In 2012, as a Trustee of the Partners for Health Foundation, the successor to the Mountainside Hospital Foundation, Co led the team that negotiated the lease to the hospital of the Foundation's property across from the hospital for the constructions of the new Medical Office Building. These transactions helped ensure that Mountainside Hospital would not only remain open and available to serve the community, but also could grow to be the excellent healthcare facility that exists today.

Co is a member of the Partners for Health Leadership Advisory Council. In addition to his service on the Mountainside Hospital and Atlantic Health boards, he has also served as President of Montclair Golf Club, member of the Montclair Board of Education, trustee of Bloomfield College, director of a number of Montclair-based non-profit organizations and was previously honored for his community service by the American Red Cross. Co currently serves on the Finance Committee of Montclair Film and is an active volunteer at Toni's Kitchen in Montclair.

A graduate of Colgate University, Co served as legal counsel to the Colgate Alumni Corporation and is a recipient of its Wm. Brian Little Award for distinguished service to the university, the highest award bestowed for alumni service. He received his JD from Seton Hall and his MBA from NYU. Following a career as a lawyer with AT&T and Lucent Technologies, Co currently maintains a commercial mediation practice. Co's wife, Andree (Andie), is a longtime Montclair volunteer and Broker Associate with Stanton Company Realtors. They are extremely proud of their four daughters, sons-in-law and nine wonderful grandchildren and even one granddaughter-in-law!

NEUBERGER | BERMAN

Neuberger Berman is proud to support

# Partners for Health Foundation

and we congratulate  
Copeland G. Bertsche

Proud Challenge Sponsor

# Hampshire

REAL ESTATE COMPANIES

---





## **TONI'S KITCHEN**

A ministry of St. Luke's Church

Toni's Kitchen is delighted to join Partners for Health Foundation in honoring the significant contributions Copeland G. Bertsche has made to Toni's Kitchen, Partners for Health Foundation and the broader community. 'Co' has touched so many lives in meaningful ways and left our institutions more robust and effective because of his talent and commitment!

# *Congratulations*

## The Sorger Family



Patrice & John F. Kelly  
are proud sponsors of the



Partners  
for Health  
A Community Foundation  
Serving the Montclair Area

## Annual Golf Tournament



Supported by Partners for Health Since 2010

A Lot to Grow, Inc. is a community garden organization designed to grow vegetables and herbs for distribution to local food pantries, soup kitchens, and non-profit senior community homes in suburban Essex County, New Jersey.



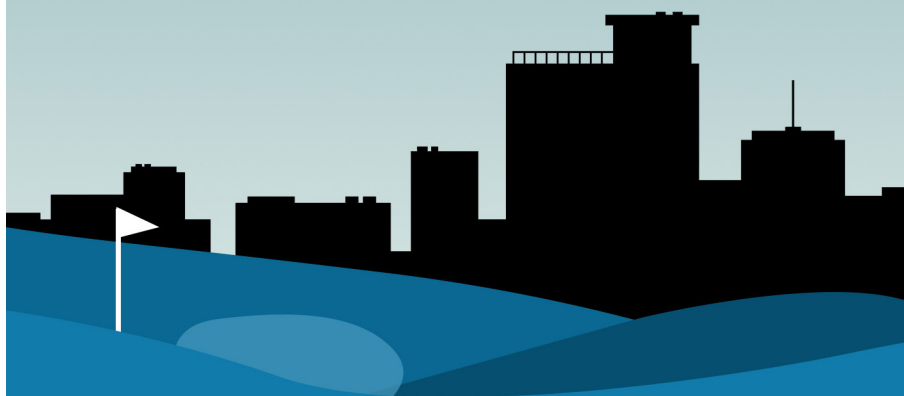


to my  
good friend of many years,  
Co Bertsche.

***Françoise Varkala***

Proud sponsor of  
Partners for Health

Congratulations Co!



bdp holdings llc

# Best Wishes...

## International Union of Operating Engineers Local 68



### Thomas P. Giblin Business Manager

#### Business Representatives & Organizers

Mike McGlynn, President

Thomas J. Coyne  
Kevin M. Giblin  
Kevin S. Kenney  
Michael D. Lewis

Charles J. McDonald  
Thomas Meister  
Andres Restrepo  
Keith Weicker

#### Organizers/Assistant Business Representatives

Marie-Paule Florestal \* Elvin "EJ" Medina \* Dahlia Vertreese

---

With our deep  
appreciation to

# Partners for Health

for your selfless dedication  
to the total wellness  
of our communities



HUMAN  
NEEDS  
FOOD  
PANTRY





ALLEN & OVERY

# Global reach. Local depth.

Allen & Overy is a global law firm that helps the world's leading businesses to grow, innovate and thrive.

[allenoverly.com](http://allenoverly.com)



## A SALUTE TO

# Resiliency

**Partners for Health Foundation** salutes the resiliency of local safety net providers who redesigned how they work in response to the COVID-19 pandemic. We proudly supported

their efforts, including grants totaling **\$552,000** that were awarded to soup kitchens, food pantries and organizations working to address and prevent both hunger and homelessness.

- We joined The Schumann Fund for New Jersey, the Montclair Fund for Women, and the Township of Montclair to establish a matching fund totaling \$80,000 to incentivize donations to Toni's Kitchen.

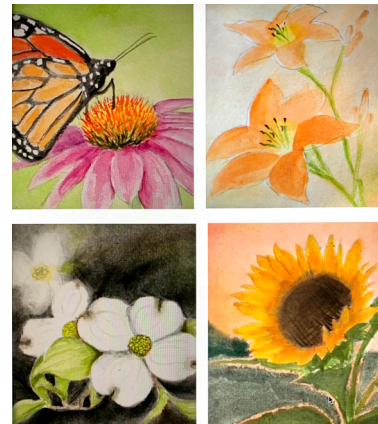
- Daytime respite from the cold for community members who are homeless was provided when public spaces in Montclair were closed. Small grants from Partners for Health, The Schumann Fund for New Jersey, and The Montclair Foundation funded start-up costs for this program.



*Photos courtesy of Toni's Kitchen*



- We co-presented HUNGRY TO LEARN during the 2020 Montclair Film Festival, a documentary about hunger on college campuses, and a virtual panel discussion about food insecurity and advocacy efforts to address hunger in New Jersey.



*Paintings by John Blackman, MILL student*

- And when Montclair's Edgemont Park House had to close, the Montclair Institute for Lifelong Learning (MILL) transitioned seamlessly to remote programming so that older adults could remain connected and engaged.



**Partners for Health**  
FOUNDATION  
partnersfdn.org

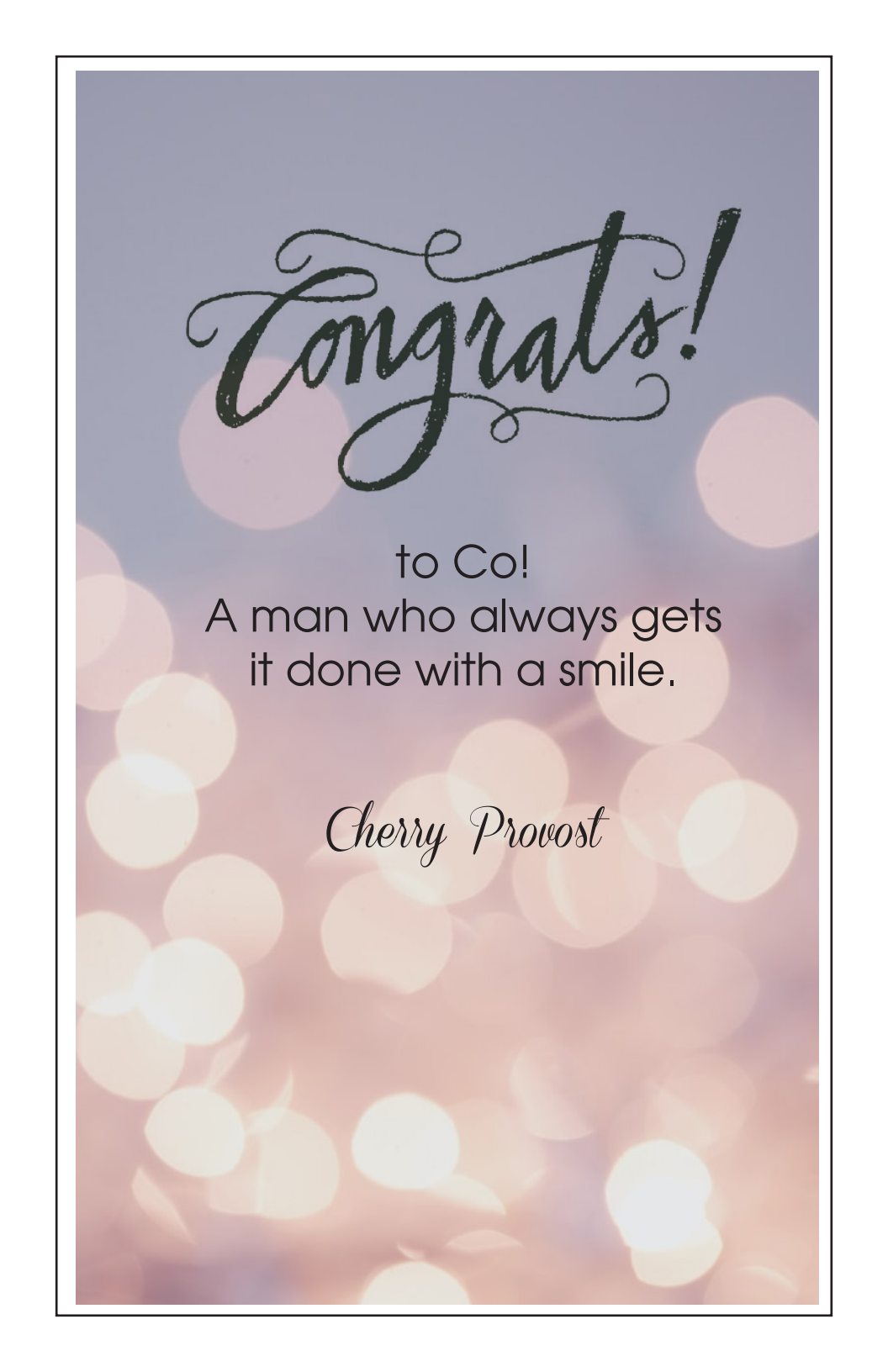


Congratulations  
to you,  
Copeland.

Thank you for all  
you do for our  
community.

Adrian Shelby  
& Family





*Congrats!*


to Co!  
A man who always gets  
it done with a smile.

*Cherry Provost*

A special thank you  
and congratulations  
for all you have  
done for our world.

Rosemary Iversen





“There are good ships  
and there are wood ships,  
the ships that sail the sea.  
But the best ships are  
friendships, and may  
they always be.  
Nevertheless, God is good,  
but never dance in a small boat.”

Thank you, Co,  
for all you have done to make our  
community a healthier, safer and softer  
place to live.

Much love,  
Emer



Congratulations Co!

Thank you for everything  
you've done for  
Partners for Health.

Love,  
Gretchen & Sandy



*Congratulations*

*and our very  
best wishes to*

*Co Bertsche*

*Your leadership,  
dedication and generosity  
with your time and  
treasure inspires us all to  
do more, and be more,  
for our community.*

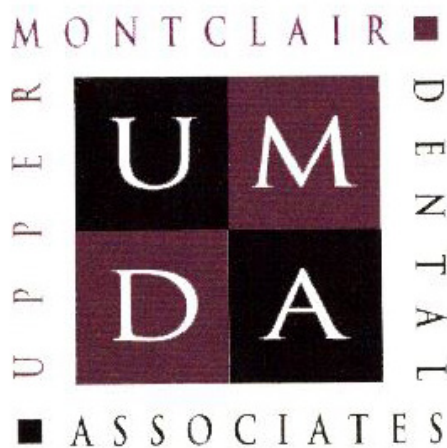
*Izumi Hara  
and  
David Koschik*



Congratulations  
Co Bertsche

**Thank you for your  
leadership in the  
community**

McMullen  
Family Foundation



[www.uppermontclairdental.com](http://www.uppermontclairdental.com)

---

# Congratulations Co!

Co, thank you for being a dear friend of  
The Montclair Foundation/Van Vleck House & Gardens  
and numerous other Montclair area organizations for many years. We are so  
lucky that you have shared your talents, time and passion creating change  
and support for so many in our community. We are thrilled Partners for  
Health is honoring you at this event.

With boundless appreciation,  
Your fans at The Montclair Foundation/Van Vleck House & Gardens



## Did You Know?

After registering an additional 1,200 clients in 2020, Human Needs Food Pantry is adding an average of 35 new households each month this year.



## Want to make an impact?

Organize a  
Healthy Food Drive  
to benefit a local food pantry  
or soup kitchen!

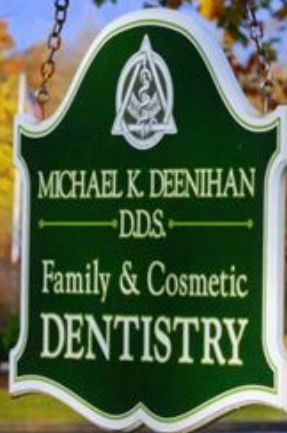


[partnersfdn.org](http://partnersfdn.org)

**Kinney Lisovicz Reilly & Wolff PC**  
**Attorneys at Law**

**Michael K Deenihan DDS**  
**Family and Cosmetic Dentistry**

**148 Central Ave**  
**Montclair NJ**  
**973-744-9330**  
**[mdeenihan@comcast.net](mailto:mdeenihan@comcast.net)**  
**[deenihandds.com](http://deenihandds.com)**





**Here's to Co!**

A faithful steward  
of his community.

Peter & Deborah Hirsch

### Did You Know?

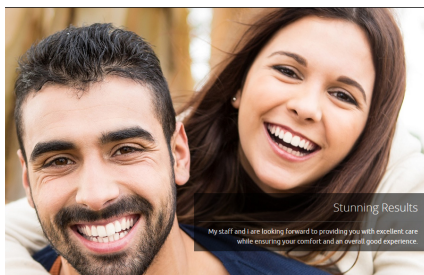
Toni's Kitchen distributed more than 1 million meals in 2020, and is trending toward distributing 1.6 million meals in 2021.



### Did You Know?

St. Peter's Haven Food Pantry in Clifton is currently serving 450 families; 30% of their clients are under 18, and 20% are seniors.





## ***Providing a Lifetime of Healthy and Beautiful Smiles!***

**George J. Papasikos, D.M.D., P.A**  
*Periodontics and Dental Implants*

**55 Park Street  
Montclair, NJ 07042  
Tel: (973) 783-2300**

Here's to  
Co!

A man who  
knows how  
to **COPE**  
with  
anything!

Thanks for all  
you do,  
Betty & Greg  
Murphy

**With congratulations  
and appreciation to**

**Co Bertsche**

**for all that he  
has done  
for our community!**

**Melinda Connolly  
& Family**



**Co Bertsche  
for your selfless  
dedication to  
healthier communities**

**Fred & Joanne  
Langbein**

# KNOW GREATER VALUE®



Christopher Petermann, Partner  
646.449.6315  
cpetermann@pkfod.com

[www.pkfod.com](http://www.pkfod.com)

## AMWINS

Amwins is a proud sponsor of [Partners for Health Foundation Annual Golf Tournament](#) –  
Honoring Copeland G. Bertsche



**The O'Kane  
Family is  
proud to  
support**

**the important  
work you do to  
keep our  
communities  
healthy**

### In appreciation of In-Kind Donors!

Amanti Vino

Lisa Amato

Karen DeLuca

Robert L. Erickson, MD

Izumi Hara

Kate Kelly

Montclair Art Museum

Pedal and Pump

Gretchen Prater

Kevin Rendino

Mitch & Pam Scott

\* Listing as of 9/13/21







**Congratulations  
to Co**

**Much love,  
Marianne Smith**

# THANK you!

## TOURNAMENT DONORS

Birgit Anderson  
Bernard Berkowitz  
Brenda Bingham  
Stephen & Evie Colbert  
Peter Frank  
Cliff & Alexis Finkle  
Stratton & Rhonda Heath  
Joel & Mary Jeffrey  
Armen & Kate Khachaturian  
Joyce Michaelson  
Dick Morgan

Jerry & Lynn Nagy  
John & Laura Phillips  
Andrew & Ana Roffe  
Gary Rombough, MD  
Herb & Rita Schaeffer  
Adrian Shelby  
Brian & Linda Sterling  
Bill & Judy Turner  
Linda Wanat  
Don & Joan Zief

*\* Listing as of 9/10/21*



### Congratulations to Co Bertsche

Thank you for your commitment, involvement  
and positivity. Partners for Health and  
Montclair are better for it.

Richard and Bobbie Polton



Congratulations Co  
And **THANK YOU** for your  
continued volunteer service  
to our community

Charles D. Shamel  
Sandra and James C. Carter



Thank you Co  
for all you have done for  
the community.

Steve and Lynn Glasser

---

**Sandpiper Partners LLC**

---

Co -

Thanks for always  
answering the need.

---

With great affection,

Judy & Bill

# Congratulations Pop-Co!

You've shown us that love means  
listening, laughing, and rolling up our sleeves.  
We are so proud of you, and we love you.



From your daughters, sons-in-law & grandkids!

*Lanie, Paul, Brit, Jon, Torie, Tom, Jessa, Karl,  
Kati, Sophie, Greta, Cole, George, Julia,  
Anna, Abby & Natty*

# Thank You!

*I can't thank each of you enough for your support of this wonderful and fun-filled event and for the privilege of being your honoree.*

*I have been overwhelmed by the response.*

*Because of you, further progress will be made in reducing hunger and homelessness in the greater Montclair area.*

*Again, thank you, and stay safe.*

*- Co Bertsche*



# Quality care *close to home.*



Mountainside Medical Center is now part of Hackensack Meridian *Health*. Being part of New Jersey's largest and most comprehensive network means convenient, local access to top physicians, nurses and staff; state-of-the-art technology and treatment options; and compassionate, comprehensive care, right in your backyard.



Hackensack  
Meridian

Mountainside  
Medical Center

One Bay Avenue  
Montclair, NJ  
07042

973-429-6000  
[mountainsidehosp.com](http://mountainsidehosp.com)